

63643-1 ✓ ACTIVE

MAG-MATE

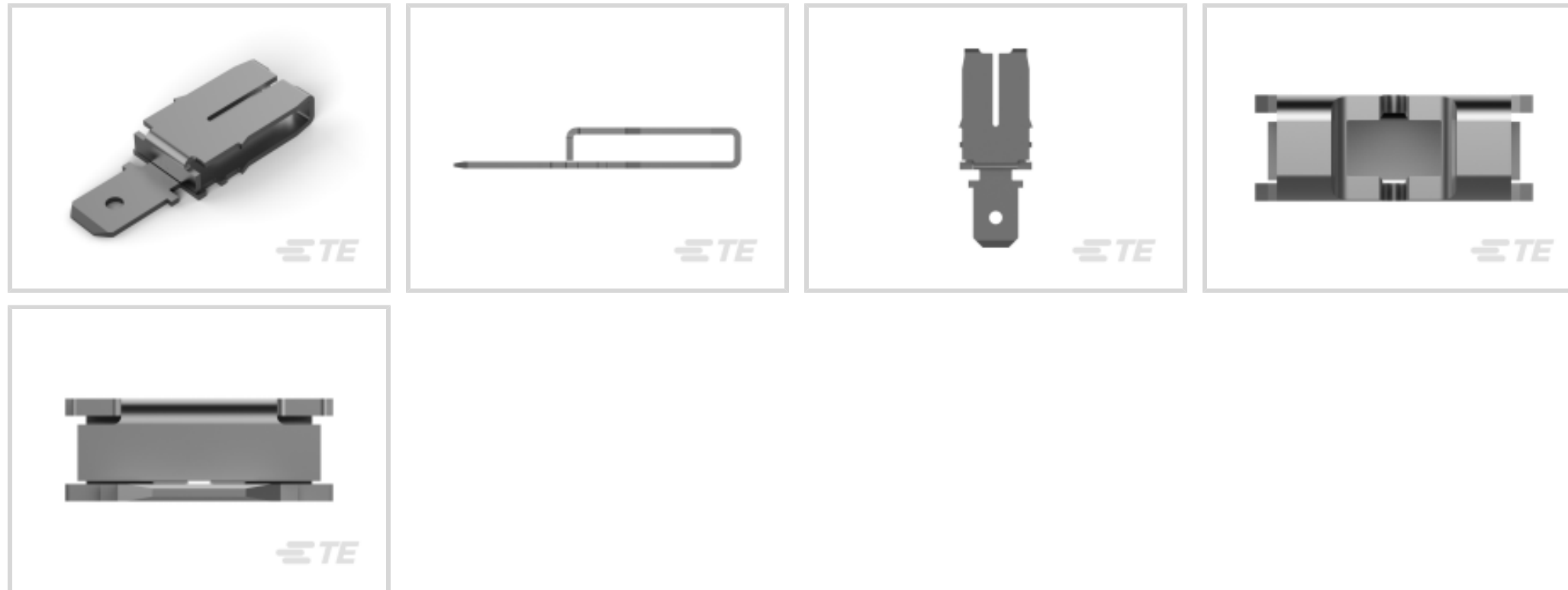
TE Internal #: 63643-1

Magnet Wire Terminals, Tab, Mating Tab Width .188 in [4.78 mm],
Size 4, .97 – 1.22 mm Aluminum Wire, 18.5 – 16.5 AWG Aluminum
Wire, MAG-MATE

[View on TE.com >](#)



Terminals & Splices > Magnet Wire Terminals



Magnet Wire Terminal Type: **Tab**

Mating Tab Width: **4.78 mm [.188 in]**

Mating Tab Thickness: **.51 mm [.02 in]**

Compatible With Cavity Size: **Size 4**

Aluminum Wire Size: **18.5 – 16.5 AWG**

Features

Product Type Features

Compatible With Discrete Wire Type	Magnet Wire, Solid
Sealable	No

Body Features

Compatible With Cavity Size	Size 4
-----------------------------	--------

Contact Features

Magnet Wire Terminal Type	Tab
Mating Tab Width	4.78 mm[.188 in]
Mating Tab Thickness	.51 mm[.02 in]
Terminal Plating Material	Tin
Terminal Orientation	Straight

Termination Features

Termination Method to Wire & Cable	Insulation Displacement (IDC)
------------------------------------	-------------------------------

Mechanical Attachment



Contact Mating Retention Type	Hole
-------------------------------	------

Dimensions

Terminal Height	12.83 mm[.505 in]
Aluminum Wire Size	.97 – 1.22 mm
Magnet Wire Size	.91 – 1.15 mm
Stock Thickness (Magnet Wire Side)	.51 mm[.02 in]
Overall Product Length	21.08 mm[.83 in]

Usage Conditions

Insulation Option	Uninsulated
-------------------	-------------

Operation/Application

Compatible With Wire Base Material	Aluminum, Copper
------------------------------------	------------------

Identification Marking

Identification Number	24
-----------------------	----

Packaging Features

Packaging Quantity	1000
Packaging Method	Reel, Reel/Carton

Other

Comment	After insertion into plastic cavity, tab portion must be bent over 45°-90° or potted in to prevent pullout when mating receptacle is disconnected., Two magnet wires may be terminated in the same terminal slot if diameters are equal.
---------	--

Product Compliance

[For compliance documentation, visit the product page on TE.com>](#)

EU RoHS Directive 2011/65/EU	Compliant
EU ELV Directive 2000/53/EC	Compliant
China RoHS 2 Directive MIIT Order No 32, 2016	No Restricted Materials Above Threshold
EU REACH Regulation (EC) No. 1907/2006	Current ECHA Candidate List: JUNE 2022 (224) Candidate List Declared Against: JUNE 2022 (224) Does not contain REACH SVHC
Halogen Content	Low Halogen - Br, Cl, F, I < 900 ppm per homogenous material. Also BFR/CFR/PVC

Free

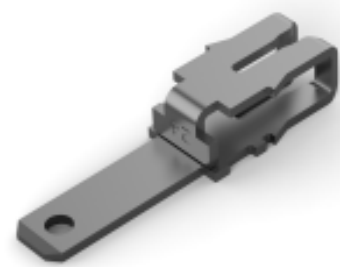
Solder Process Capability

Not applicable for solder process capability

Product Compliance Disclaimer

This information is provided based on reasonable inquiry of our suppliers and represents our current actual knowledge based on the information they provided. This information is subject to change. The part numbers that TE has identified as EU RoHS compliant have a maximum concentration of 0.1% by weight in homogenous materials for lead, hexavalent chromium, mercury, PBB, PBDE, DBP, BBP, DEHP, DIBP, and 0.01% for cadmium, or qualify for an exemption to these limits as defined in the Annexes of Directive 2011/65/EU (RoHS2). Finished electrical and electronic equipment products will be CE marked as required by Directive 2011/65/EU. Components may not be CE marked. Additionally, the part numbers that TE has identified as EU ELV compliant have a maximum concentration of 0.1% by weight in homogenous materials for lead, hexavalent chromium, and mercury, and 0.01% for cadmium, or qualify for an exemption to these limits as defined in the Annexes of Directive 2000/53/EC (ELV). Regarding the REACH Regulation, the information TE provides on SVHC in articles for this part number is based on the latest European Chemicals Agency (ECHA) 'Guidance on requirements for substances in articles' posted at this URL: <https://echa.europa.eu/guidance-documents/guidance-on-reach>

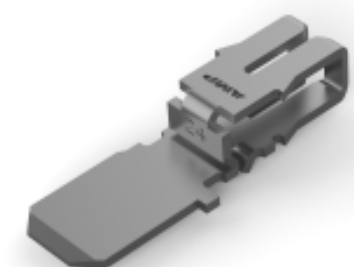
Compatible Parts



TE Part # 63145-1
MAG-MATE 110 TAB 17-19 020TPBR



TE Part # 63667-1
MAG-MATE 187 FAST TAB 020TPBR



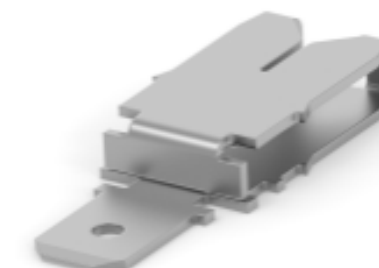
TE Part # 62888-2
MAG-MATE 187 TAB 020 TPBR



TE Part # 63708-1
TAB MAG-MATE 187 FAST 0198TPBR



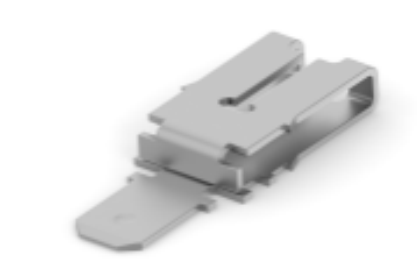
TE Part # 1217356-1
MAG-MATE TERM 19-17 0157 TPNBR



TE Part # 1217042-1
MAG-MATE TAB 187FAST 27-23TPBR



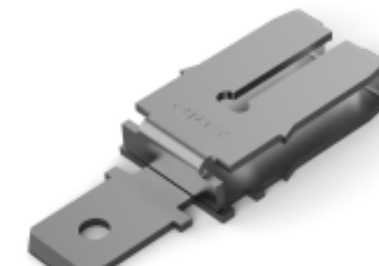
TE Part # 1217090-1
MAG-MATE FAST TAB TPBR



TE Part # 63353-1
MAG-MATE 187 FAST TAB 020TPBR



TE Part # 63599-1
MAG-MATE 187 F-TAB 020TPBR



TE Part # 63666-1
MAG-MATE 187 FAST TAB 020TPBR



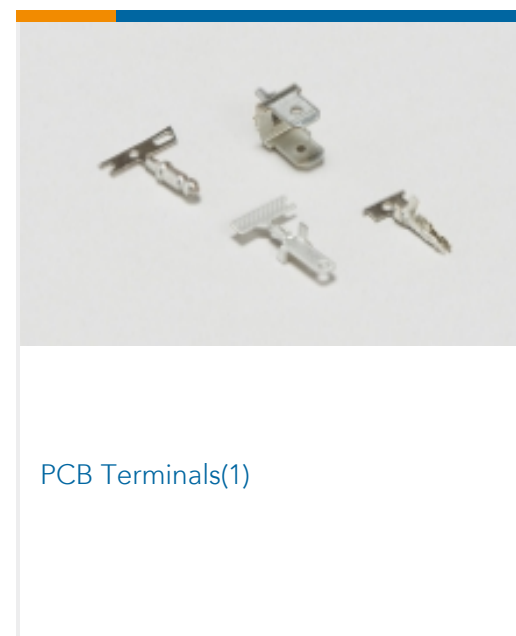
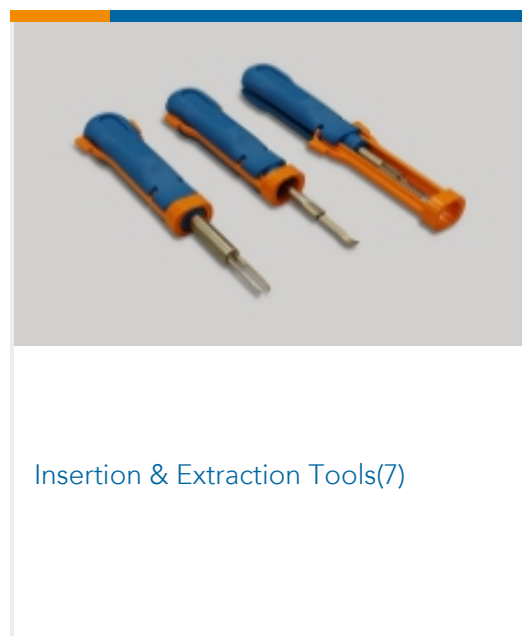
TE Part # 63762-1
MAG-MATE 187 FAST TAB 020 TPBR



TE Part # 63878-1
TERM MAG-MATE SPR GRD 125TAB



Also in the Series | MAG-MATE



Documents

Product Drawings

[MAG-MATE 187 FAST TAB 0198TPBR](#)

English

CAD Files

[3D PDF](#)

3D

Customer View Model

[ENG_CVM_CVM_63643-1_G.2d_dxf.zip](#)

English

Customer View Model

[ENG_CVM_CVM_63643-1_G.3d_igs.zip](#)

English

Customer View Model

[ENG_CVM_CVM_63643-1_G.3d_stp.zip](#)

English

By downloading the CAD file I accept and agree to the [Terms and Conditions](#) of use.

Datasheets & Catalog Pages

[Magnet Wire Terminals & Splices](#)

English

Product Specifications

[Application Specification](#)

English

63643-1

Magnet Wire Terminals, Tab, Mating Tab Width .188 in [4.78 mm], Size 4, .97 – 1.22 mm Aluminum Wire, 18.5 – 16.5 AWG Aluminum Wire, MAG-MATE



Product Environmental Compliance

TE Material Declaration

English